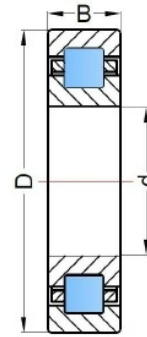


CYLINDRICAL ROLLER BEARINGS-SINGLE ROW

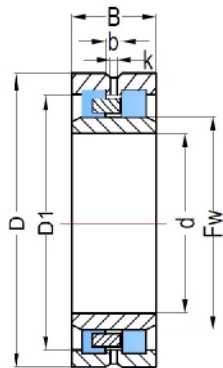


CHINA HOSIN



This type of bearings is separable. As their rollers linearly come into contact with inner ring and outer ring with less coefficient of friction, these bearings have very good capacity of radial load, suitable for electric motors, automobiles, transmission shafts, gear shafts and so on.

Type	d	D	B	weight(kg)	Type	d	D	B	weight(kg)
NU 204	20	47	14	0.11	NU 413	65	160	37	3.36
NU 2204	20	47	18	0.144	NU 214	70	125	24	1.16
NU 304	20	52	15	0.15	NU 2214	70	125	31	1.54
NU 2304	20	52	21	0.217	NU 314	70	150	35	2.75
NU 205	25	52	15	0.137	NU 2314	70	150	51	1.04
NU 2205	25	52	18	0.166	NU 414	70	180	42	5.28
NU 305	25	62	17	0.24	NU 215	75	130	25	1.25
NU 2305	25	62	24	0.345	NU 2215	75	130	31	1.58
NU 405	25	80	21	0.57	NU 315	75	160	37	3.26
NU 206	30	62	16	0.211	NU 2315	75	160	55	4.91
NU 2206	30	62	20	0.266	NU 415	75	190	45	6.27
NU 305	30	72	19	0.361	NU 216	80	140	26	1.5
NU 2306	30	72	27	0.513	NU 2216	80	140	33	1.92
NU 406	30	90	23	0.757	NU 316	80	170	39	3.93
NU 207	35	72	17	0.3	NU 2316	80	170	58	5.91
NU 2207	35	72	23	0.414	NU 416	80	200	48	7.36
NU 307	35	80	21	0.481	NU 217	85	150	28	1.9
NU 1203	35	80	31	0.702	NU 2217	85	150	36	2.5
NU 407	35	100	25	0.101	NU 317	85	180	41	4.6
NU 208	40	80	18	0.382	NU 2317	85	180	60	6.81
NU 2208	40	80	23	0.495	NU 417	85	210	52	9.56
NU 308	40	90	23	0.665	NU 218	90	160	30	2.35
NU 2308	40	90	33	0.962	NU 2218	90	160	40	3.18
NU 408	40	110	27	1.28	NU 318	90	190	43	5.38
NU 209	45	85	19	0.438	NU 2318	90	190	64	8.04
NU 2209	45	85	23	0.54	NU 418	90	225	54	11.5
NU 309	45	100	25	0.876	NU 219	95	170	32	2.79
NU 2309	45	100	36	1.26	NU 2219	95	170	43	3.89
NU 409	45	1420	29	1.62	NU 319	95	200	45	6.23
NU 210	50	90	20	0.493	NU 2319	95	200	67	9.38
NU 2210	50	90	23	0.578	NU 419	95	240	55	13.6
NU 310	50	110	27	1.14	NU 220	100	180	34	3.42
NU 2310	50	110	40	1.69	NU 2220	100	180	46	4.68
NU 410	50	130	31	1.99	NU 320	100	215	47	7.69
NU 211	55	100	21	0.648	NU 2320	100	215	73	11.9
NU 2211	55	100	25	0.786	NU 222	110	200	38	3.85
NU 311	55	120	29	1.45	NU 224	120	215	40	4.64
NU 2311	55	120	43	2.16	NU 226	130	230	40	5.5
NU 411	55	140	33	2.5	NU 228	140	250	42	6.96
NU 212	60	110	22	0.84	NU 230	150	270	45	11.2
NU 2212	60	110	28	1.09	NU 232	160	290	48	14.0
NU 312	60	130	31	1.82	NU 234	170	310	52	17.4
NU 2312	60	130	46	2.69	NU 236	180	320	52	19.4
NU 412	60	150	35	3.04	NU 238	190	340	55	21.6
NU 213	65	120	23	1.07	NU 240	200	360	58	26.5
NU 2213	65	120	31	1.47	NU 244	220	400	65	35.0
NU 313	65	140	33	2.23	NU 248	240	440	72	46.9
NU 2313	65	140	48	3.25					



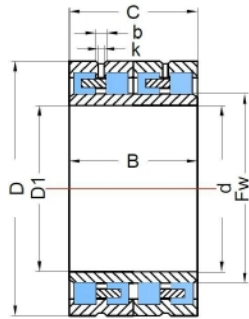
With the compact structure and small distortion when loading, this type of bearings is good at the spindles of machine tools. It could be assembled the inner ring and out ring and subassembly respectively. It could be borne more radial load than the single row cylindrical roller bearing with the same radial size.

Type	d	D	B	weight(kg)
NN3036	180	280	74	17
NN3036K				
NN3038	190	290	75	22
NN3038K				
NN3040/W33	200	310	82	23
NN3040K/W33				
NN3048/W33	240	360	92	31.5
NN3048K/W33				
NN3052	260	400	104	46
NN3052K/W33				
NN3056	280	420	106	49.8
NN3056K				
NN30/560/W33	560	820	195	319
NN30/560K/W33				
NN30/670/W33	670	980	230	560
NN330/670K/W33				
NNU4020	100	150	50	3.11
NNU4020K				
NNU4926	130	180	50	3.83
NNU4926K				
NNU4936	180	250	69	9.8
NNU4936 K/W33				
NNU49/530	530	710	180	211
NFP38/630	630	780	112	125

CYLINDRICAL ROLLER BEARINGS-FOUR ROW



CHINA HOSIN



This type of bearings is with four row rollers, great radial load, small radial size and high limiting speed. It could not take the axial load. It's separable to assemble inner & outer ring & parts. FC is the basal type. For taking great load, high precision running and assembling easy, it's used in the rollers of cold & hot rolling mill

Type	d	D	B	weight(kg)	Type	d	D	B	weight(kg)
FC182870	90	140	70	3.8	FC3450150	170	250	150	25.2
FC182874	90	140	74	4.11	FC3450168	170	250	168	28.2
FC202780	100	135	80	3	FC3450170	170	250	170	28.6
FC202870	100	140	70	3.14	FC3451180	170	255	180	32.5
FC202880	100	140	80	3.5	FC3452120	170	260	120	23
FC2028104	100	145	104	4.8	FC3452150	170	260	150	28
FC202970	100	150	70	3.61	FC3452170	170	260	170	31
FC2030106	100	170	106	6.43	FC3452192	170	260	192	36.5
FC223490	110	170	90	7.16	FC3452225	170	260	225	43.5
FC2234120	110	180	120	9.8	FC3650156	180	250	156	28.7
FC243692	120	180	92	7.8	FC3652120	180	260	120	20.2
FC2436105	120	200	105	9	FC3652124	180	260	124	20.7
FC2640104	130	200	104	11.6	FC3652156	180	260	156	28.7
FC2640125	130	190	125	14	FC3652160	180	260	160	28.8
FC1838119	140	210	119	9.6	FC3652168	180	260	168	28.8
FC2842106	140	210	106	12.46	FC3653180	180	265	180	34
FC2842100	140	210	100	12.3	FC3656180	180	280	180	40.4
FC2842125	140	210	125	14.9	FC3852124	190	260	124	19.5
FC2842155	140	210	155	16	FC3858168	190	260	168	26.1
FC2942150	145	225	155	17.5	FC3853124	190	265	124	21.2
FC2945156	145	225	156	23	FC3854166	190	270	166	30.5
FC3045120	150	210	120	16	FC3854168	190	270	168	21
FC3042120	150	220	120	12.5	FC3854200	190	270	200	36.3
FC3044120	150	220	120	15.6	FC3856200	190	280	200	41.5
FC3044150	150	220	150	19.4	FC4054170	200	270	170	28.5
FC3045120	150	225	120	16	FC4056170	200	280	170	33.5
FC3045150	150	225	150	20	FC4056188	200	280	188	36.1
FC3046130	150	230	130	19.8	FC4056200	200	280	200	37.5
FC3046150	150	230	150	23	FC4058130	200	290	130	27.6
FC3046156	150	230	156	24	FC4058192	200	290	192	41.7
FC3246130	160	230	130	15.8	FC4058202	200	290	202	43.4
FC3246168	160	230	168	23	FC4062230	200	310	230	65.4
FC3248124	160	240	124	19.6	FC4156190	205	280	190	35.6
DC3248124	160	240	124	17.6	FC4258192	210	290	192	38.2
FC3248168	160	240	168	26.1	FC4260170	210	300	170	38.1
FC3446120	170	230	120	14.1	FC4260210	210	300	210	47.6
FC3446130	170	230	130	15.6	FC4460190	220	300	190	39.5
FC3446180	170	230	180	21.1	FC4460192	220	300	192	40
FC3448130	170	240	130	18.7					